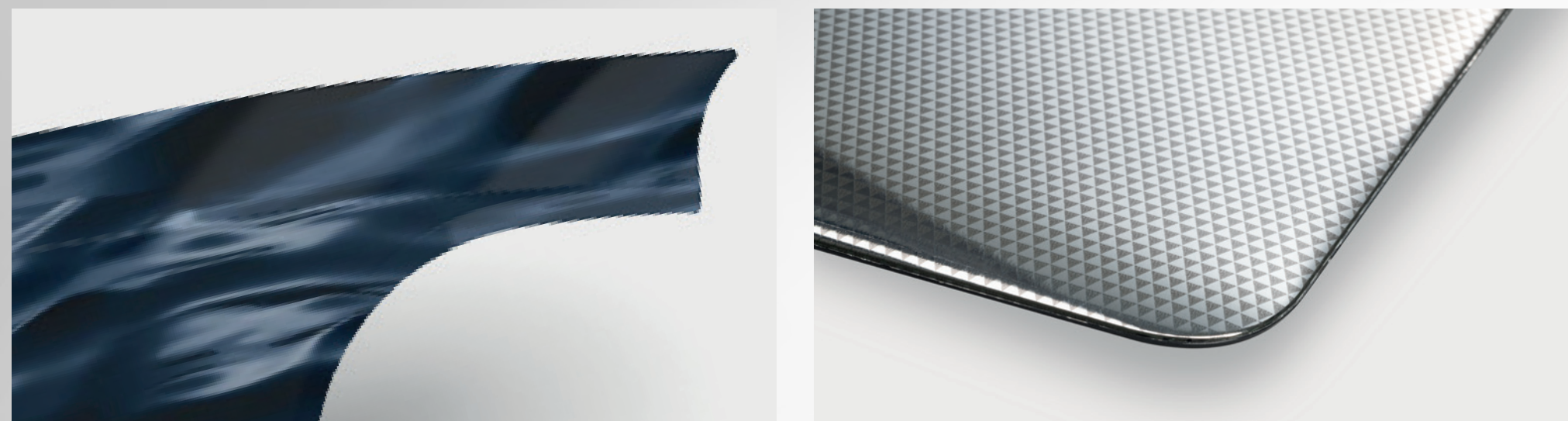


# New Metal

Bright like a diamond



Indium-based metallization offers you unlimited design freedom: Patterns and colors are just as possible as a real chrome look, glossy, matte, semi-matte and brushed surfaces.

## Benefit from these further advantages:

- Meets the automotive and consumer electronics industries' high standards
- Suitable for 5G
- Supports antenna use and radar radiation
- Backlightable and therefore ideal for Shy Tech designs and touch operation
- Environmentally friendly alternative to electroplating
- Usable on partial surfaces
- Ideal for exterior applications thanks to high corrosion, UV, and abrasion resistance
- Efficient IMD series process (indium) or hot-stamping process (chrome)
- Suitable for different types of plastic (ABS, PC/ABS, ASA, PP, PA12)
- Can be used with recycled materials

➔ [www.plastic-decoration.com/en/solutions/applications/chrom-indium](http://www.plastic-decoration.com/en/solutions/applications/chrom-indium)

